

Featured Speaker:

Sue Carlson

Sue Carlson has been camping for years... As a mother of four grown children and now grandmother to seven grandchildren, many awesome experiences have marked her journey!



Not naturally an out-doorsy type of person, but someone who will do almost anything to be with family, some of these adventures have been a bit on the traumatizing side!

Sue has served in the Kansas-Nebraska Conference for the last 14 years. She currently serves as the Women’s, Children & Family Ministries Director as well as Ministerial Spouse Sponsor. She loves the wonderful opportunities her job brings to connect with other women and to hear the journeys they share. It is her prayer that God will open our eyes to the wonderful and varied camping adventures He has planned along our way to the Kingdom. But for now...“we’ll pitch our tents in the land of hope!”

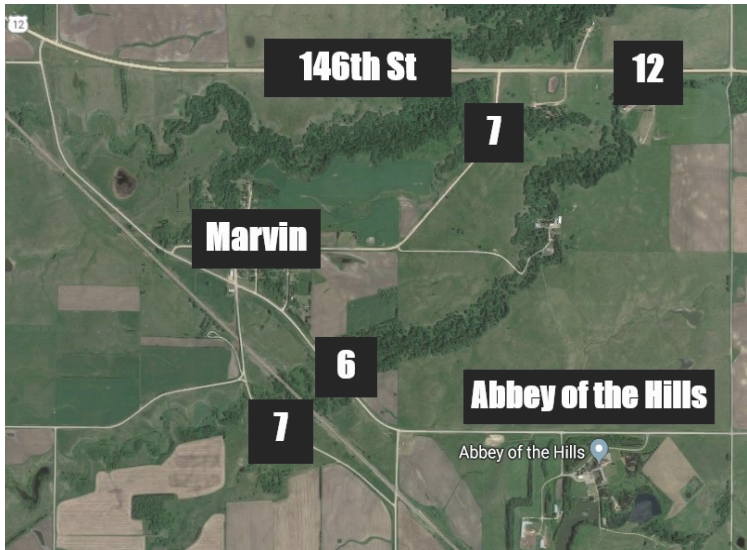
Typically, car/cellphone/GPS will not successfully navigate directions to the Abbey of the Hills, so please follow the instructions below.

DIRECTIONS TO THE ABBEY:

From Milbank, SD, take Hwy 12 west for 12 miles to 147th St. (Abbey sign), turn left and drive 1.2 miles.

From I-29 take Exit 207. Turn east on Hwy 12, drive 9 miles to 147th St. (Abbey sign), turn right and drive 1.2 miles.

From Aberdeen, SD, continue east on Hwy 12 for 12 miles, past I-29 intersection to 147th St. (Abbey sign), turn left and drive 1.2 miles.



**32nd Annual Dakota Conference
Women’s Retreat**



October 9 - 11, 2020

Abbey of the Hills
46561 147th Street
Marvin, South Dakota

Tenative Schedule

Friday, October 9

| | |
|--------------|---------------------|
| 3:00-5:30 pm | Early Bird Classes |
| 3:00 | Registration Begins |
| 6:00 | Supper |
| 7:00 | General Session |

Sabbath, October 10

| | |
|----------|-----------------------------------|
| 7:45 am | Small Group Devotional |
| 8:30 | Breakfast |
| 9:30 | General Session |
| 12:00 pm | Lunch |
| 1:00 | Free Time |
| 2:00 | Mini Session: Chelsea Christensen |
| 3:00 | Mini Session: Paulette Bullinger |
| 4:30 | General Session |
| 6:00 | Supper |
| 7:00 | Sing Along/Firepit/Smores |
| 8:00 | Garage Sale or Puzzles/Free Time |

Sunday, October 11

| | |
|---------|------------------------------|
| 9:00 am | Devotional Time with Friends |
| 8:30 | Breakfast |
| 9:30 | General Session |
| 11:30 | Wrap-up |

Friendly Reminder: This is a time to renew friendships and strengthen your relationship with God. Please avoid bringing anything that might distract you from that precious time.

Please spread the word to your pastor’s wife, scholarships are available specifically for them! If you are not a pastor’s wife but need help with registration fees, please contact your church’s women’s ministries for possible assistance from your local church.

Optional Early Bird Sessions

Painting with Kathy: \$20 fee
Join Kathy Tebelius as she guides you to paint a fun picture to take home. Anyone can do it! See website for example. www.dakotaadventist.org

Abbey Tour: Free
Explore the beauty and history of the campus led by Abbey personnel. Wear comfortable walking shoes. Approximate tour time is one hour.

Woman to Woman Project

Items will be collected for the Beacon Center, a local women’s shelter. Needs include: cleaning supplies; dish & laundry soap; dryer sheets; bleach; 13 gallon garbage bags; diapers - size 4,5,6; non-perishable food items. Please do not bring clothing.

Sabbath evening following supper, we will watch the sun go down around a campfire by the lake. There will be a sing-along and s’mores. Be sure to bring warm clothes for the event!

Registration Is a One-Step Process

Register with the Dakota Conference for sleeping rooms, retreat and early-bird sessions by mail or online. Full brochures may be printed online and shared with friends.

Information You Need to Know

- All women ages 16 and up are invited to attend.
- This year’s setting is one of peace and tranquility to allow for spiritual growth and reflection. Take time to explore the surrounding beauty.
- Non-dairy options will be available. For other special dietary needs, make personal provisions.
- There are no locks on doors in sleeping rooms, however, outer doors are secured each night.
- Early bird sessions start at 3:00 pm on Friday. See details to the left. Additional fees apply.
- Check in at the Abbey on Friday starting at 3:00p.
- Register early for best choice of accommodations.
- Bring warm campfire clothes.
- On Saturday evening there will be a “Garage Sale” of past conference gift items.
- Join the ladies Sabbath morning for a small-group devotional time. Sunday morning, grab a friend and enjoy a devotional together in this peaceful setting.
- Consider sponsoring another woman to attend.
- Masks are not required but feel free to bring one.

**SEND REGISTRATION FORM
AND CHECK TO**

Dakota Conference
7200 N Washington St
Bismarck, ND 58503-6301
(701) 751-6177

Register online at **www.dakotaadventist.org**
Ministries » Women’s Ministries »
» Women’s Retreat Registration

DAKOTA CONFERENCE CHRISTIAN WOMEN'S RETREAT
October 9-11, 2020

Name _____

Address _____

City/State/Zip _____

Phone _____

Home Church _____

Email _____

Roommate Preferences _____

Reservations will be made on a first-come basis.

Each person must register individually.

STARTING

FEES

SEPT 1

| | | |
|---------------------------|-------|-------|
| ----- Full Retreat | \$185 | \$210 |
|---------------------------|-------|-------|

| | | |
|--|-------|-------|
| ----- Retreat Only (no sleeping room, includes all meals, activities & handouts for three days) | \$120 | \$145 |
|--|-------|-------|

| | | |
|---|------|-------|
| ----- Sabbath Only (no sleeping room, includes Sabbath meals, activities & handouts) | \$90 | \$115 |
|---|------|-------|

| | | |
|-------------------------------------|------|--|
| ----- Early Bird Painting | \$20 | |
|-------------------------------------|------|--|

| | | |
|---------------------------------------|-----|--|
| ----- Early Bird Abbey Tour | \$0 | |
|---------------------------------------|-----|--|

TOTAL ENCLOSED _____

FULL PAYMENT must accompany each reservation form.

No refunds or registrations accepted after October 4.

CHECKS PAYABLE TO: Dakota Conference